

# HURRICANE 300s



*Dimensional drawing on other side*

## SPECIFICATIONS

### •SKID MOUNT

Heavy duty steel frame with fork pockets and adjustable jack stands

### •POWER SOURCE

30HP TEFC electric motor, NEMA 4X enclosure with all controls and disconnect

### •VACUUM AIR FLOW (Blower)

Positive displacement, 850 CFM @ 15"Hg vacuum, 3 belt driven

### •FILTRATION SYSTEM (3-Stage)

Stage 1: Cyclonic separation

Stage 2: Baghouse, 12 Teflon coated, sealed-edge, quick-change filter bags with continuous shaker cleaning system

Stage 3: Blower Safety Filter

## SAFETY FEATURES

- OSHA approved belt guard
- Optional HEPA filtration
- Blower safety filter
- Emergency stop button

## STANDARD EQUIPMENT

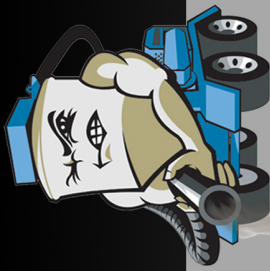
- Paint - one color (custom lettering optional)
- Wet or dry operation
- Hydraulic jack to raise/lower baghouse
- (4) jack stands
- Inspection door (Hopper)
- Manual vacuum break
- Gravity style dump door
- Quick release filter access door

## OPTIONS

- Certified lift cage
- HEPA filtration
- Diesel powered
- Air compressor
- Auto dump
- Reverse pulse filter cleaning



INDUSTRIAL VACUUM EQUIPMENT CORPORATION  
N8150 Maple Street • Ixonia, WI 53036  
800-331-4832 • 920-261-1136 • FAX 920-261-7117  
[www.IndustrialVacuum.com](http://www.IndustrialVacuum.com)



**HURRICANE**<sup>TM</sup>

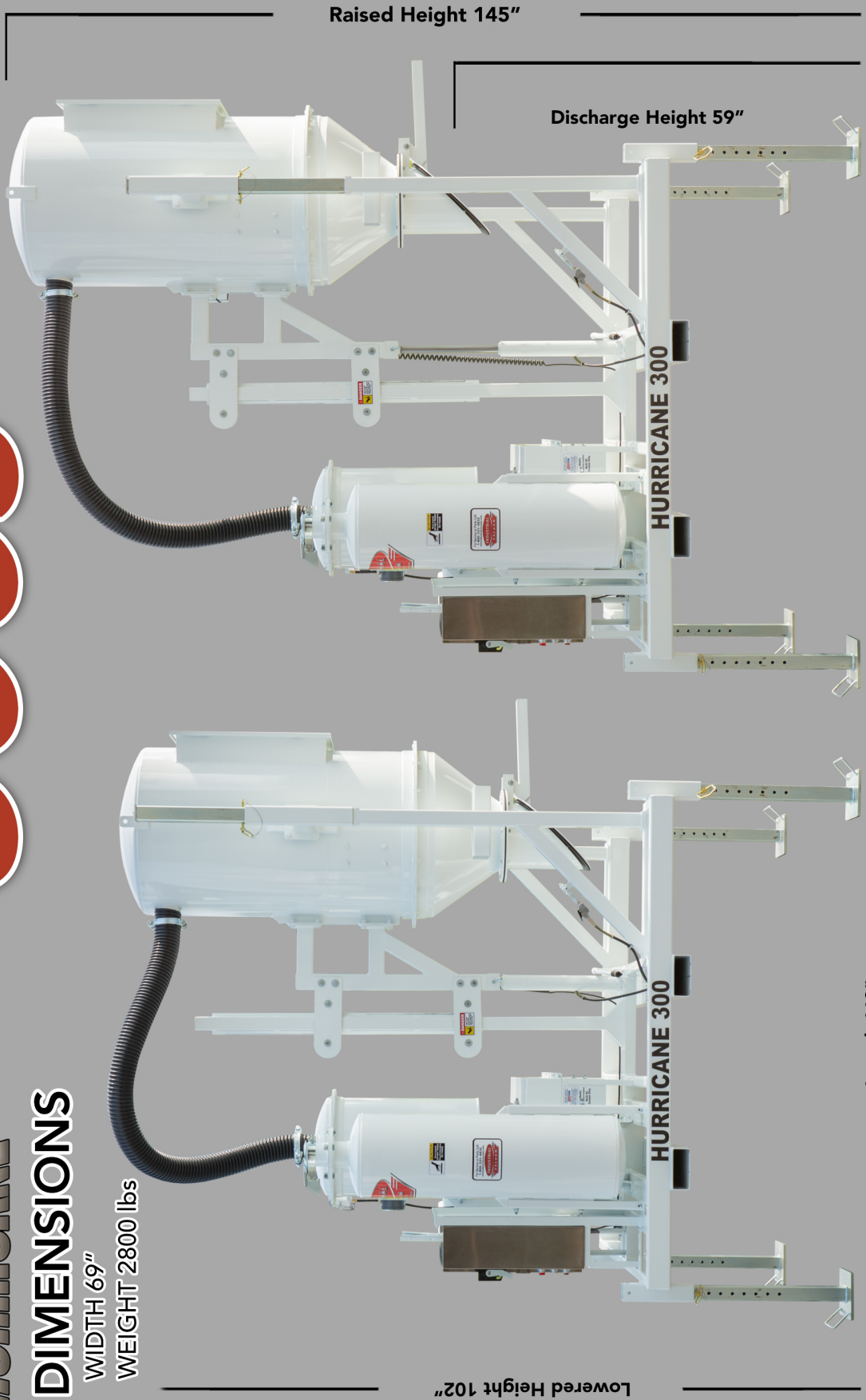
# HURRICANE 300S



## DIMENSIONS

WIDTH 69"

WEIGHT 2800 lbs



Lowered Height 102"

Raised Height 145"

Discharge Height 59"

HURRICANE 300

HURRICANE 300

Length 113"