



20 Reasons to Work with Industrial Vacuum

What Makes Our Industrial Vacuums the Most Innovative, Reliable, and Safe

INDUSTRIAL VACUUM

COMPETITOR VACUUM

SAFETY



- 1
- Safer traveling unit.
 - Industrial vacuum uses wider trailer – 99".
 - Lower height profile – 11' 1".
 - Drop down axles create lower center of gravity.
 - Less chance of a rollover.

- 1
- Competitor width is approximately 98.5".
 - Height is approximately 11' 5".

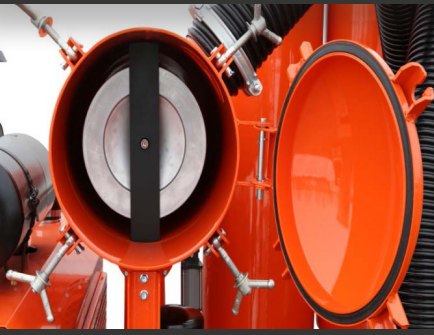
SERVICE CENTERS



- 2
- Service centers nation wide.

- 2
- UNKNOWN

BLOWER PROTECTION FILTER



- 3
- Filter removal:
 - Time saving
 - No tools needed
 - No heavy 6" hose to remove
 - Easy access Horizontal filter access

- 3
- Filter removal:
 - Tools required
 - Remove 6" hose
 - Remove multiple bolts
 - Remove dirty filter*
 - Cumbersome vertical design with heavy bolt on lid

INCREASED VACUUM WITH BLOWER SHIELD



- 4
- Special shielded blower creates an extra 2" of mercury.
 - 624 blower creating 18" of mercury.

- 4
- NOT OFFERED

BLOWER DRIVE BELT



- 5
- Belt can be replaced without removing the complete belt guard:
 - Quicker
 - Safer*

- 5
- Heavy belt guard needs to be removed to replace the belts.

CONTROLS



- 6
- Single control location.
 - Engine and vacuum system controls are located in the same area.

- 6
- Three (3) locations for their controls:
 1. Engine
 2. Vacuum
 3. Hydraulics

BAGHOUSE



- 7
- Air cannon filter pulse system that cleans all of the bag at the same time.
 - Single solenoid and diaphragm.
 - Single blast pipes help in with pins.

- 7
- Cleans on row of bags per pulse.
 - 5 solenoids and 5 diaphragm.
 - 5 blast pipes held in by bolts.

BELT TENSION



- 8
- Superior belt tension design system with engine guide.

- 8
- All thread bolt used as belt tensioner with grooved cut.
 - Acts as guide into channel.

TONGUE AREA

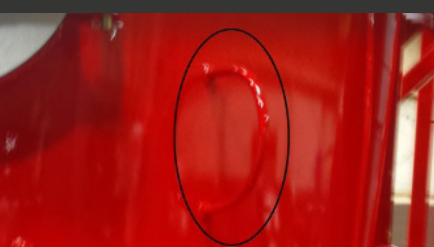


- 9
- Tongue coupling is re-enforced with a 5" x 3" x 3/8" tube totaling 11" x 3" tongue support.
- 10
- Heavy duty jack is mounted inside tongue frame for better protection.

- 9
- 2 diagonal plates for added support.

- 10
- Light duty hand jack is unprotected on the outside of the tongue frame.

HOSE ASSIST



- 11
- Hose installation assist.
 - Install choker rope around hose and use ring for additional leverage.

- 11
- NOT OFFERED

VACUUM SUPPORT LEGS



- 12
- Larger support leg footprint – 8" x 8".

- 12
- Smaller round footprint – 4" disk.

FILTERBAG CHANGE OUT



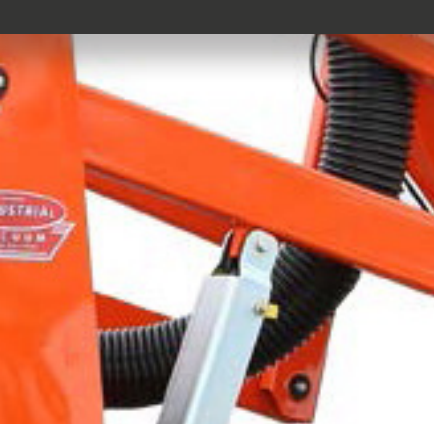
- 13
- Quicker and safer* filter replacement:
 - No tools needed to raise lid
 - No 6" hose removal to raise lid
 - No tools needed to replace filters
 - No tool needed to snap filters into place

- 13
- Blast pipes and filters:
 - 5 worm clamps for blast pipes
 - 37 worm clamps for filters
 - 2-4 bolts for diamond bracket
 - Requires extra time and tools to replace filters
 - If improperly installed filters will fail

- 14
- Cleaned by single burst of air with a rigid blast pipes system and air tank inside hopper (500 and 600 series):
 - Less components to troubleshoot and/or replace

- 14
- NOT OFFERED

HOPPER SUPPORT



- 15
- Hopper support while in the raised position:
 - Integral lift and locking system without the need of extra support tubes
 - Less weight
 - Safety*
 - Saves money – fewer lost safety pins to replace

- 15
- Uses a heavy support strut that is dangerous to remove and pin in place.

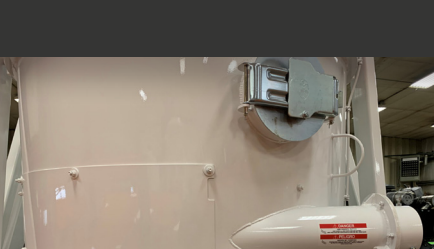
FUEL TANK



- 16
- Filler tube located on driver side.
 - Makes filling fuel tank easier while on the job site.

- 16
- NOT OFFERED

HOPPER WEAR SECTION



- 17
- Removable wear plates, less costly than replacing entire wear section.

- 17
- Throw away wear section, costs more to replace than individual wear plates.

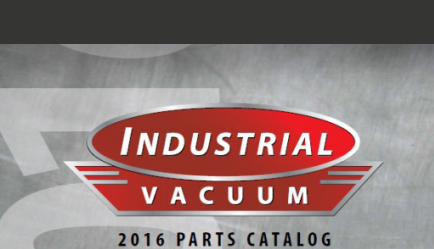
TOOL BOX



- 18
- Better constructed tool box:
 - Included
 - Heavier construction

- 18
- Optional light duty tool box.

INTERNET PRESENCE



- 19
- Product marketing and ordering:
 - YouTube videos
 - Online catalog
 - Online ordering

- 19
- No videos.
 - Online catalog is cumbersome.
 - No online ordering.

FINISHED PRODUCT



- 20
- All phases of the manufacturing process are completed in the same building:
 - Raw material are delivered
 - Frame built
 - Unit assembled
 - Acid bath and primer coat
 - Paint
 - Two hours of testing
 - Delivery

- 20
- Unit leaves factory to be painted.
 - Susceptible to contaminants from road debris and inclement weather.
 - Can be exposed to elements for weeks waiting to be scheduled.

FINAL INSPECTION



- 21
- Every unit has a final inspection and is operated under a full load for 2 hours before delivery.

- 21
- UNKNOWN

